



CASE STUDY

Whitfords Nodes Park

DualShade Fabric



THE BRIEF

PROJECT

Whitfords Nodes Park

CLIENT

West Coast Shade
City of Joondalup

LOCATION

Hillarys Beach Park, WA

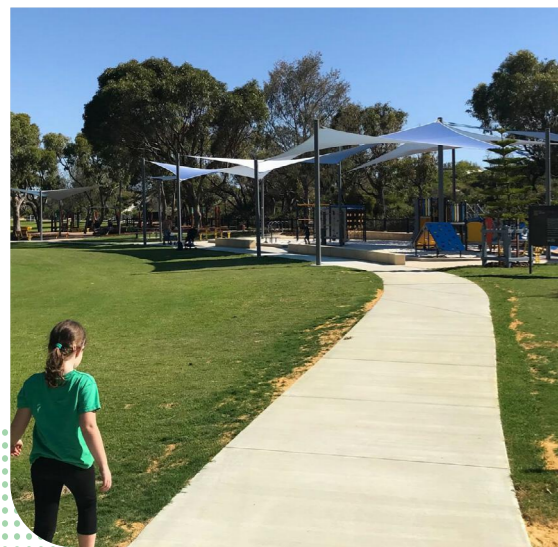
PRODUCT

DualShade®
Colour: Santorini

Forming part of the greater development plan for the health and wellbeing hub at Whitfords Nodes in WA, the Hillarys Beach Park had undergone a transformation.

The redesign covered several older play zones previously found around the area which were outdated and offered little relief from the sun.

The City of Joondalup's Landscape Architect for the project, Peter Pырchla, explained that some of the key features — including shade sails — would be chosen specifically to reflect the bright summer tones of a “beach ball”.



THE SOLUTION

IN CONJUNCTION WITH THE PARK'S AESTHETIC, THE SHADE MATERIAL HAD TO MEET SPECIFICATION REQUIREMENTS FOR PERFORMANCE IN LINE WITH STRINGENT PROTECTION STANDARDS, EXPOSURE TO HIGH WINDS AND HARSH COASTAL CONDITIONS.



DualShade® 350 is manufactured using a patent pending knit pattern that features a single colour on one side and complementary colour on the other. Because of this, the material has been described as changing colour in a 'pearlescent' manner as you walk around the structure.

This was achieved using a 1 to 5 slope during construction by West Coast Shade. West Coast Shade comments that while flipping each roll of material over during the fabrication process to suit the alternating blue and white design was a challenge, the visual achievement was well worth it.

“ ”

DualShade was really good to work with, it handled just like Commercial 95.

West Coast Shade

Combined with a UV block rating of up to 93.6% DualShade® 350 achieves maximum durability using high quality, UV-stabilised yarn manufactured with a patented intertwining knit pattern. These characteristics make DualShade® 350 a more dimensionally stable fabric and achieve superior long-term performance through an even distribution of force while tensioned.

THE RESULT

VISUALLY, THE PARK BOASTS A CLEAN AND MODERN LOOK THAT BLENDS IN NATURALLY TO THE COASTAL LANDSCAPE.

Overall, the pearlescent effect of DualShade® 350 provides the City of Joondalup Council with an innovative and refreshing way to enhance the Whitford Nodes Beach Park.

What's more, DualShade helps reduce the frequency of having to re-tension the structure, lowering maintenance costs and resulting in longer fabric life.



Gale Pacific Limited

Established in the 1970s and with offices around the world, Gale Pacific is a leading manufacturer of high-performance fabrics for domestic, commercial and industrial applications.

Our team of consultants can support you with expert advice and an industry leading product range... we make it easy for you.



1800 331 521

galecommercial.com

