

Commercial[®] 95 340

Architectural Shade Fabric

Commercial 95[®] 340 is the flagship of GALE Pacific's Architectural Shade Fabrics range. It is the name synonymous with commercial-grade shade cloth in many parts of the world. Designed for use on tension structures and suitable for a wide variety of applications, Commercial 95[®] 340 offers the ultimate combination of maximum sun protection, strength and durability to ensure maintenance-free, long-life performance.

Made from high quality UV-stabilised HDPE in GALE Pacific's off-shore facility – Commercial 95[®] 340 was engineered in Australia as a strong and stable outdoor fabric for tension structures and shade sail applications.

It is 100% lead and phthalate free and is the first architectural shade cloth in the world to be granted Oeko-Tex[®] 100 and Greenguard[®] certification.

Applications

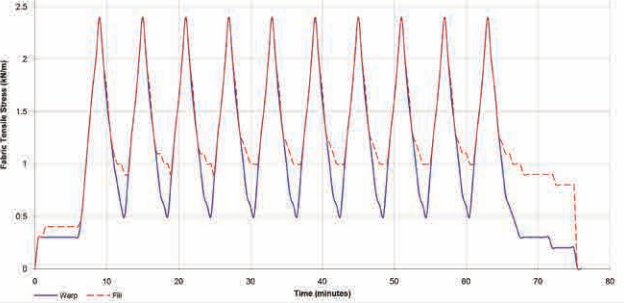
- Tension structures
- Awnings
- Shade sails
- Car Park structures

Usage Instructions

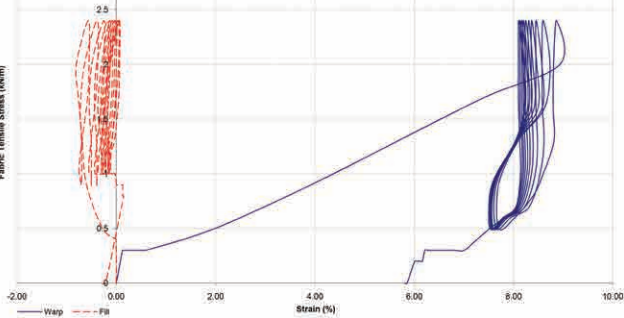
Do not use against flames.

Contact with organic solvents, halogens or highly acidic substances may reduce the service life of the fabric and void the warranty.

Load Diagram



Biaxial Stretch Test



Material

Yarn	Knitted UV-stabilised HDPE
Construction	Monofilament & tape
Pattern	Lock-stitch knitted
Temperature range	-30°C to +70°C
Roll length	40m
Roll width	3m width (folded)

Properties

Nominal fabric mass (AS 2001.2.13)	340gsm ± 20
Approximate thickness	1.6mm

Performance

Tensile Strength-Warp	635 N/50mm
Elongation at break (%)	95.6
Tensile Strength-Weft (AS 2001.2.3.1)	2494 N/50mm
Wing Tear – Warp (mean)	187 N
Wing Tear – Weft (mean) (AS 2001.2.10)	359 N

Elongation at break (%)	70.4
Bursting Pressure (mean) (AS 2001.2.4)	3500 kPa
Bursting Force (mean) (AS 2001.2.19)	2146 N

Flammability

(AS2001.2.19)	
Flammability Index (range0-100)	14

Lead & Phthalate Tests

(CPSIA Section 101(a)(2))	
Lead not detected (CPSIA Section 108)	PASS
Phthalate not detected	PASS

Suggested Specification

Shade cloth fabric shall be compliant to Australian standard AS 4174 and shall be Commercial 95 340 knitted HDPE monofilament & tape shade fabric offering a UV block up to 97%.

Colour	Code	Nom Width*	Length**	Cover Factor	Shade Factor	Av % Trans	Av% UVR Trans	Av PAR Trans	%UVR Block	PF	PF Calculated
Aquatic Blue	444938	3m	40m	96.8	90.2	9.8	6.4	11.2	93.6	15.0	32.2
Black	444945	3m	40m	98.2	97.4	2.6	2.6	2.7	97.4	35.0	59.8
Navy Blue	445010	3m	40m	96.2	94.4	5.6	4.7	5.7	95.2	14.7	33.3
Sky Blue	445034	3m	40m	95.2	90.4	9.6	6.2	9.9	93.8	16.0	21.3
Brunswick Green	444952	3m	40m	96.2	93.9	6.1	4.9	6.3	95.1	15.0	32.6
Cayenne	455255	3m	40m	92.0	87.0	13.0	6.0	11.6	94.0	11.0	14.7
Cedar	465360	3m	40m	94.9	87.7	12.3	5.3	12.6	94.7	18.0	19.4
Charcoal	444969	3m	40m	94.7	94.2	5.8	5.3	5.8	94.7	11.4	23.2
Cherry Red	444976	3m	40m	90.1	75.3	24.7	10.7	22.4	89.3	8.8	12.1
Desert Sand	444983	3m	40m	94.0	85.0	15.0	3.6	16.1	96.4	10.0	20.3
Gun Metal	455262	3m	40m	97.1	96.2	3.8	2.3	3.9	97.7	23.0	54.9
Natural	445003	3m	40m	97.9	74.3	25.7	3.2	30.1	96.8	35.0	62.4
Deep Ochre	444990	3m	40m	95.1	91.3	8.7	5.6	8.5	94.4	12.1	26.3
Rivergum	445027	3m	40m	94.7	85.0	15.0	7.7	15.6	92.3	12.6	20.8
Steel Grey	445041	3m	40m	95.6	88.4	11.6	7.0	12.3	93.0	13.1	26.1
Turquoise	445065	3m	40m	94.0	90.0	10.0	5.7	11.7	94.3	11.9	18.0
Yellow	445072	3m	40m	98.3	77.2	22.8	2.9	25.0	97.1	45.0	71.3

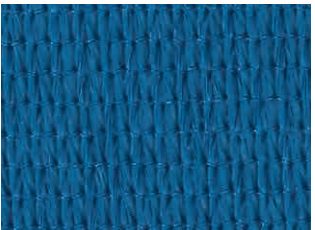
Approx. roll weight: 44kg

Approx. roll diameter: 0.37m

Core diameter: 35mm

*Folded. **Roll.
The above results are typical averages from independent testing and quality assurance testing and are not to be taken as a minimum specification nor as forming any contract between GALE Pacific and another party. Due to continuous product improvement product specifications are subject to alteration without notice.
As the use and disposal of this product are beyond GALE Pacific's control, regardless of any assistance provided without charge, GALE Pacific assumes no obligation or liability for the suitability of its products in any specific end use application. It is the customer's responsibility to determine whether GALE Pacific's products are appropriate for the specific application and complies with any legal & patent regulations.
The calculated protection factor is for the material only and does not account for the effect of indirect UVR when situated at a distance from the persons being protected.

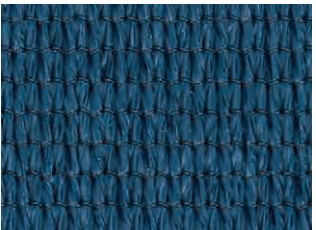
Colours Available



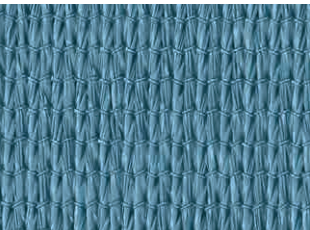
Aquatic Blue 444938
93.6% UVR Block



Black 444945
97.4% UVR Block



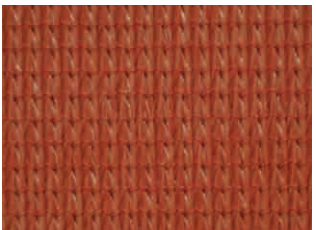
Navy Blue 445010
95.2% UVR Block



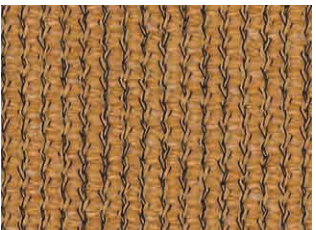
Sky Blue 445034
93.8% UVR Block



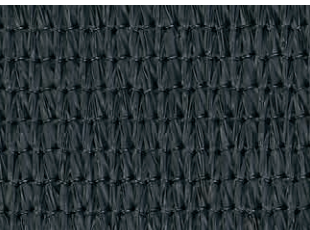
Brunswick Green 444952
95.1% UVR Block



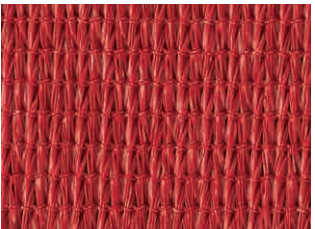
Cayenne 455255
94.0% UVR Block



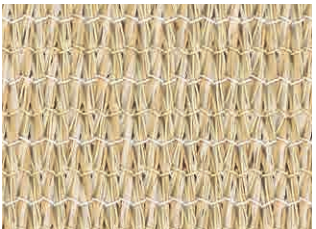
Cedar 465360
94.7% UVR Block



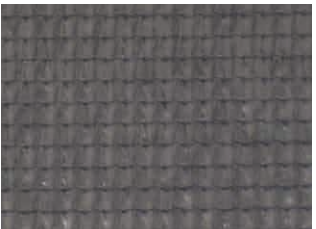
Charcoal 444969
94.7% UVR Block



Cherry Red 444976
89.3% UVR Block



Desert Sand 444983
96.4% UVR Block



Gun Metal 455262
97.7% UVR Block



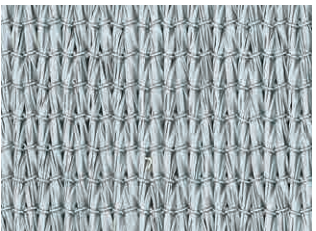
Natural 445003
96.8% UVR Block



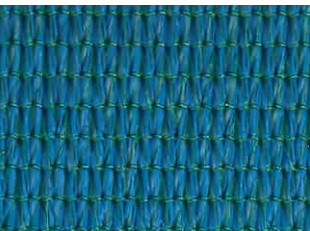
Deep Ochre 444990
94.4% UVR Block



River Gum Green 445027
92.3% UVR Block



Steel Grey 445041
93.0% UVR Block



Turquoise 445065
94.3% UVR Block



Yellow 445072
97.1% UVR Block

Please note, due to the limitations of the printing process, colours may not represent the true colour

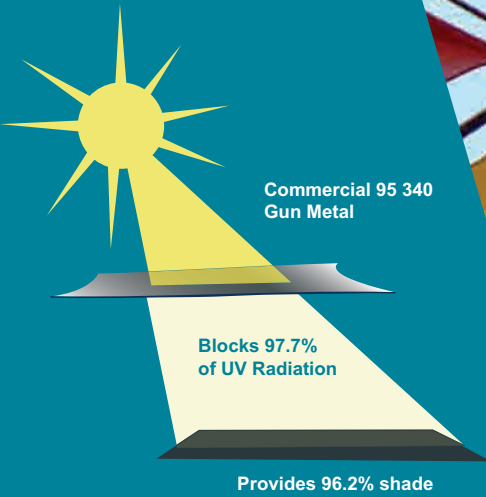
GALE Pacific architectural shade fabrics are designed to be strong and stable for use in architectural, outdoor, large-scale tension structures. All GALE Pacific architectural shade fabrics offer the ultimate combination of maximum sun protection, strength and durability to ensure maintenance-free, long-life performance.

GALE Pacific architectural fabrics are 100% lead and phthalate free and the first architectural shade cloth in the world to be granted Oeko-Tex Standard 100 and Greenguard Certification.

UVR Block & PF Ratings

All GALE Pacific shade fabrics have been fully tested according to AS4174 by the Australian Radiation Protection & Nuclear Safety Agency and feature the highest PF results available to deliver the highest level of UVR protection of any commercial shade cloth. Commercial 95 340 shade fabric ranges up to 97.7% UVR block which is considered as “excellent protection” under guidelines set by Australia’s Sun Smart and the Cancer Council.

The % UVR block relates to the ability of the shadecloth to reflect or absorb UVR within the 290nm to 400nm range of the spectrum. Heightened exposure to UVR has been shown to increase the rates of skin cancer. Therefore, the percentage of UVR block is an important factor when selecting shadecloth designed to protect people.



Commercial 95 340 is OEKO-TEX® Standard 100 and Greenguard children and school certified.

As the demand for healthy, sustainable products continues to expand, consumers and building industry professionals increasingly demand substantiation of product sustainability claims and rely on trustworthy third-party certifiers to guide purchasing and specification decisions. GREENGUARD & Oeko-Tex Standard 100 Certification provides the market with solutions and resources to ensure healthier environments, and provides manufacturers with credible tools to legitimize and promote their sustainability

The GREENGUARD and Oeko-Tex Standard 100 Certifications set stringent limits for products to achieve in several key areas such as:

- Limiting Volatile Organic Compound (VOC) content
- Lowering formaldehyde emissions
- Lowering lead and phthalate content



Commercial® 95 340

Architectural Shade Fabric

TENSION STRUCTURES

AWNINGS

SHADE SAILS



AU	P 1800 331 521	F +61 3 9518 3398	gpcommercial.com
NZ	P 0800 555 171	F 0800 555 172	
UAE	P +971 4 881 7114	F +971 4 881 7167	
USA	P 1800 560 4667	F +1 407 772 0553	

