

GALE Pacific
Commercial Fabrics
and Cancer Council
**Helping to protect
Australians
together**





The only architectural shade fabrics endorsed by Cancer Council

We're proud of our history of innovation and we now offer one of the largest ranges of architectural shade fabrics in the world.

GALE Pacific invented high density polyethylene (HDPE) shade fabrics in the 1970's. Today we're a leading global manufacturer of architectural shade fabrics that are trusted to perform over time and provide long lasting sun protection and peace of mind to end users.

We know our shade fabric helps to create more comfortable and beautiful spaces, but we also know it's vital for protecting Australians from the harmful effects of UV radiation, which is why we're proud

to announce our architectural shade fabrics are now endorsed by Cancer Council, Australia's leading cancer charity that works across every area of cancer, from research, to prevention, and support.

Now, by choosing GALE Pacific Commercial Fabrics, you can be safe in the knowledge you're not only offering your customers a quality product that provides a high level of UV protection, but one that is endorsed by Cancer Council.

"Cancer Council is delighted to announce a new endorsement partnership with GALE Pacific Commercial Fabrics, endorsing GALE's range of architectural shade fabrics used in the construction of shade structures for a range of applications including schools, playgrounds and council facilities to name a few.

Our endorsement partnership with GALE Pacific Commercial Fabrics not only brings innovation in sun protection, but will make a valuable contribution to our research, education and support programs and services. We look forward to working together to help reduce the burden of skin cancer in Australia."

Tanya Buchanan,
CEO, Cancer Council Australia

Helping to protect Australians through education

Australia has one of the highest rates of skin cancer in the world. Each year in Australia skin cancers account for around 80 per cent of all newly diagnosed cancers. Around 2,000 people die from this disease every year.

However, more than 95 per cent of skin cancer cases are caused by unprotected exposure to UV radiation from the sun, meaning it is a nearly entirely preventable cancer.

Seeking shade, including built, natural and portable shade, is recommended when the UV level reaches three or above to assist in protecting yourself from skin damage. Shade is one of the most

effective forms of sun protection as it can reduce UV exposure by up to 75 per cent. Cancer Council's iconic Slip-Slop-Slap campaign that hit our TV screens in 1981 has been extended in recent years to include SEEK (Seek Shade) and SLIDE (On Sunglasses). Our products help Australians SEEK shade and this message will be reinforced through our endorsement partnership with Cancer Council.

**“AT LEAST
2 IN 3
AUSTRALIANS WILL
BE DIAGNOSED WITH
SKIN CANCER
BEFORE 70
YEARS OF AGE”**

“At least 2 in 3 Australians will be diagnosed with skin cancer before the age of 70. Good quality shade plays a vital role in reducing UV exposure. Both GALE Pacific and Cancer Council share a commitment to education and innovation in shade products that help protect Australians against the damage that can be caused by excessive exposure to UV radiation.”

Tanya Buchanan,
CEO, Cancer Council Australia



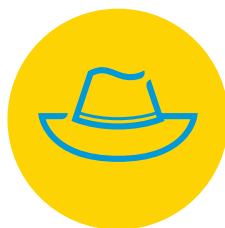
Protect yourself **five ways** from skin cancer



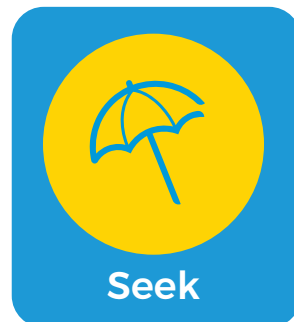
Slip



Slop



Slap



Seek



Slide

The value of endorsement

Not all shade fabric is created equal. At GALE Pacific we take great pride in manufacturing the highest quality shade fabric using premium-grade materials that stand the test of time and offer UV protection.

Cancer Council has recognised the high UV protection our shade fabric provides and the endorsement from this organisation is not only of value to us but to you, our customers.

As the leading cancer charity in Australia, Cancer Council's

endorsement is a trust mark and an opportunity for you to gain increased specification, particularly with schools, government and councils who will immediately recognise the organisation's strong credentials when it comes to sun protection.

Ultimately, it will give peace of mind that you're providing a shade fabric that offers a high level of sun protection. This has the power to differentiate you and your business.

GALE Pacific Commercial Architectural Shade Fabric Range

These are our three shade fabric ranges in market that are endorsed by Cancer Council



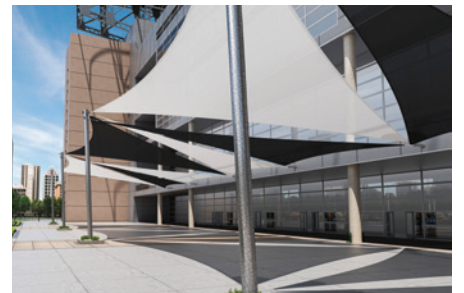
Commercial **NinetyFive** 340

The world's most recognised architectural fabric for commercial shade applications.



Commercial **DualShade** 350

A revolutionary two-tone high quality knitted shade fabric, where performance and function meet design.



Commercial **Heavy** 430

Delivers the perfect balance between strength and protection for large span tension structures.

The entire range is also available in a Flame Retardant (FR) variant. GALE Pacific offers Australia's most extensive range of FR architectural knitted fabrics.

Commercial NinetyFive® 340

Designed for tension structures and shade sails, Commercial NinetyFive® 340 is engineered in Australia using high-quality UV-stabilised HDPE. This fabric offers the ultimate combination of maximum sun protection, strength and durability to ensure maintenance-free long-life performance.

It's 100 per cent lead and phthalate-free, and we're proud to state it's the first architectural shade fabric in the world to be granted Oeko-Tex® 100 and Greenguard® certification.

Commercial NinetyFive® in action - Melbourne Private School.

With schools utilising outdoor areas for recess, lunch, as well as sport, it's important they have adequate shade protection.

This Melbourne school first commissioned this large-scale shade structure to be installed by Sunsoft Shade Systems using GALE Pacific's Commercial NinetyFive® shade fabric, in alternating panels of navy blue and yellow. It has been playing a vital role in keeping

school children and staff protected from the harsh Australian sun, while allowing them much needed time outdoors.

The significant advantages of Commercial NinetyFive® fabric is that it allows a cooling breeze to pass through while offering 95 per cent UV block, and it stands the test of time in extreme weather.

The impressive structure covers over 1,750 sq m, which is still considered a 'mega' installation by today's standards, however, premium materials and superior workmanship always prevail.

"The quality of the fabric along with our unique construction, sewing, thread and major cable and support systems allowed the cloth to enjoy a long life," says Andrew Hughes, Technical Manager, Sunsoft Shade Systems.

"Based on past performance and our long-standing history with the Commercial NinetyFive® fabric, it was an easy decision to use it again for the 'next generation' of superb shade coverage."



Note: All Designs, Concepts, Methodology and Techniques remain the property of Sunsoft Shade Systems Australia Pty Ltd ACN 074 730 966. All information provided is protected by Copyright, Patents, Trademark Registration or a combination. Unlawful reproduction or use of trademarks, copyrights or patents may result in prosecution. Lawful reproduction or use is only available through the written permission of Sunsoft Shade Systems Australia Pty Ltd.

Commercial DualShade® 350

Our newest architectural shade fabric, Commercial DualShade® 350, is made using a patent-pending knit pattern and features a single colour on one side and complementary colour on the opposite side. The beautiful palette of colour combinations enhances the design of any outdoor space.

Maximum durability and superior dimensional stability are achieved through our proprietary knit pattern, and DualShade® 350 is backed by a full 10-year warranty against UV degradation.

Whether you're creating a structure for a school, playground, office building, hospital, or sports complex there is a DualShade® 350 colour combination to match any environment with a unique design.

Commercial DualShade® in action - Whitfords Nodes Park

Forming part of the greater development plan for the health and wellbeing hub at Whitfords Nodes in Western Australia, the Hillarys Beach Park underwent a transformation at the end of 2019. The redesign substitutes several older play zones previously found around the area which were outdated and offered little relief from the sun.

The City of Joondalup's Landscape Architect wanted to reflect the bright summer tones of a "beach

ball" through key features including play equipment and shade sails.

DualShade® 350 features a single colour on one side and complementary colour on the other. Because of this, the material has been described to change colour in a 'pearlescent' manner as you walk around the structure. This was achieved using a 1 to 5 slope during construction by West Coast Shade and flipping each roll of material over during the fabrication process to suit the alternating blue and white design to achieve the visual effect.

In conjunction with the park's aesthetic, the shade material had to meet specification requirements for performance in line with stringent protection standards, exposure to high winds and harsh coastal conditions.

Combined with a UV block rating of up to 93.6 per cent, DualShade® 350 achieves maximum durability using high quality, UV-stabilised yarn manufactured with a patented intertwining knit pattern. The ideal solution for a coastal playground where children and parents need to seek shade protection.



**“DualShade®
was really good
to work with,
it handled just
like Commercial
NinetyFive®.”**

West Coast Shade.

Landscape Architect:
Peter Pырchla, City of Joondalup
www.joondalup.wa.gov.au

Sail Fabrication:
West Coast Shade.
www.westcoastshade.com.au



Speers Point Swim Centre, NSW

Sail Designer, Fabricator and Installer: Alfresco Shade
www.alfrescoshade.com.au

Commercial Heavy 430

Architectural Shade Fabric specifically engineered to withstand extreme weather conditions on large-scale tension structures, Commercial Heavy is made from 100 per cent round monofilament and designed using a patented intertwining knit pattern.

Commercial Heavy 430 features superior biaxial and load bearing performance for optimum shade and tensioning endurance. Available in 16 colours, making it easier than ever to complement existing design elements and colour schemes while providing high UV protection.

Commercial Heavy 430 in action - Speers Point Swim Centre, NSW

As part of a \$684,000 state funding commitment through the Stronger Country Communities Fund, Lake Macquarie City Council has helped co-fund multiple shade structure upgrades across five of its Lake Mac Swim Centres, including a \$300,000 redevelopment of the Speers Point

Swim Centre. The upgrade is aimed at improving the amenities for a fast-growing community.

Since its completion, Speers Point Swim Centre now includes a solar heating system, diving blocks and two brand new shade structures using 860m² of Commercial Heavy 430 architectural shade fabric from GALE Pacific.

Alfresco Shade was responsible for the end-to-end process of designing, fabricating and installing the massive new shade structures. Due to the location of the project, each area needed “a cover that has to last the distance in a coastal zone”. The large single sail installation also required a monofilament fabric that was able to be tensioned evenly across all four corners.



GALE Pacific Limited

145 Woodlands Drive, Braeside Victoria 3195

Toll Free: 1800 331 521 | www.galecommercial.com