

## Premium Hortshade®

Commercial Knitted

LIGHT-WEIGHT SHADE STRUCTURES

HORTICULTURAL SHADING

PRIVACY SCREENING

LIVESTOCK SHADING



[galecommercial.com](http://galecommercial.com)

AU P 1800 331 521

NZ P 0800 555 171

UAE P +971 4 881 7114

USA P 1800 560 4667





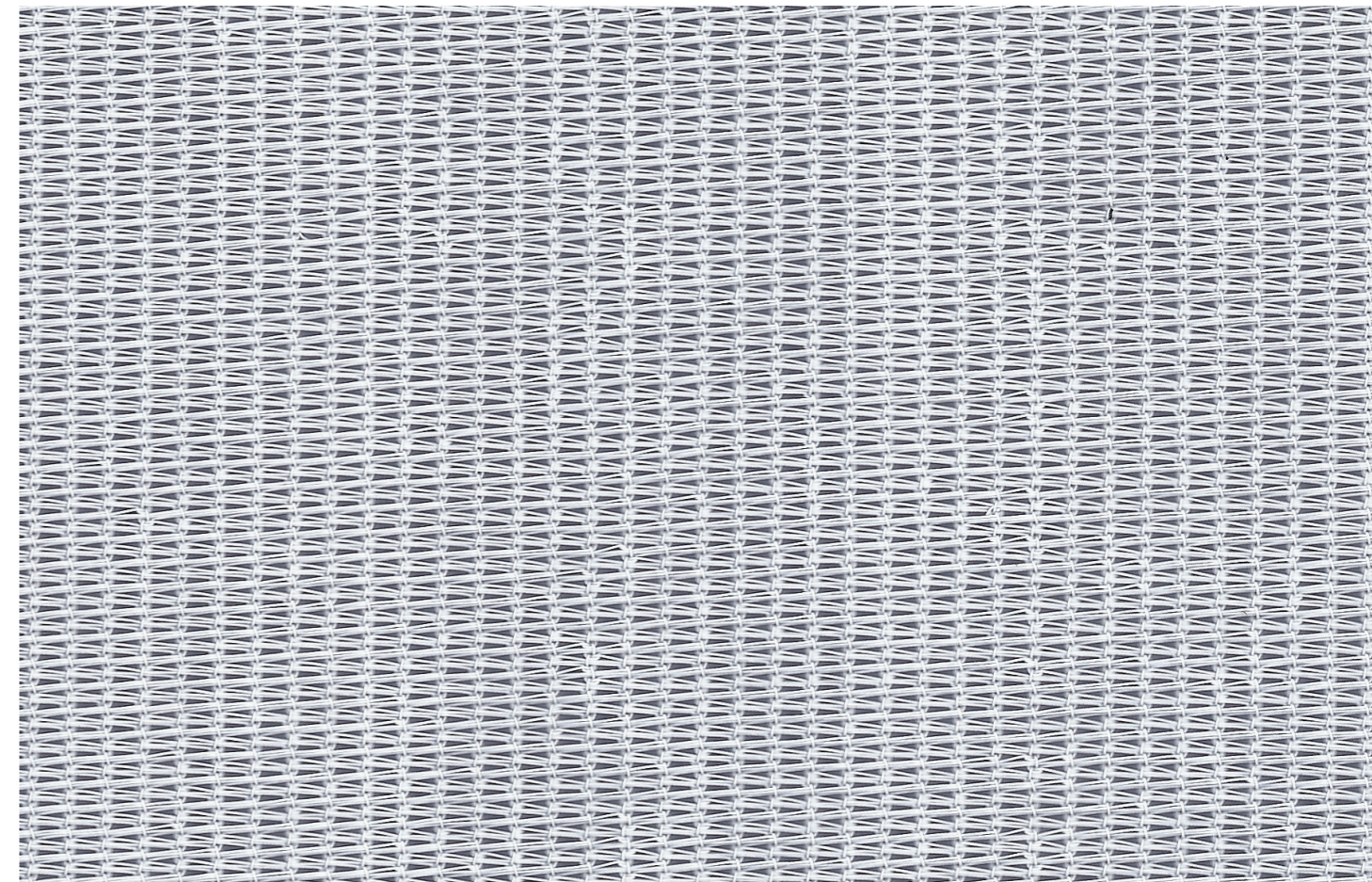
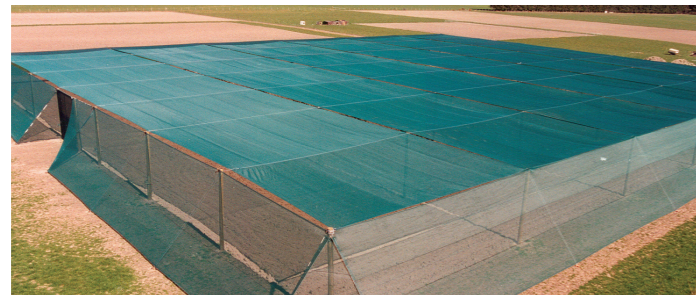
# Premium Hortshade®

Commercial Knitted

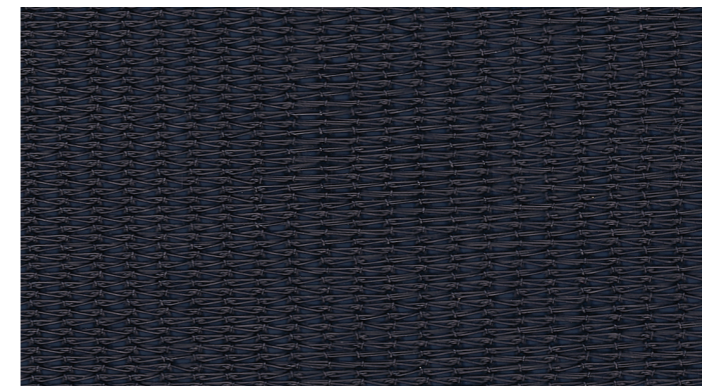


GALE Pacific's Premium Hortshade® is an high-quality, knitted shadecloth that provides optimum performance in any climate. Available in range of weights and colours and designed for use in horticultural, agricultural and commercial applications to protect animals / livestock, assets and crops.

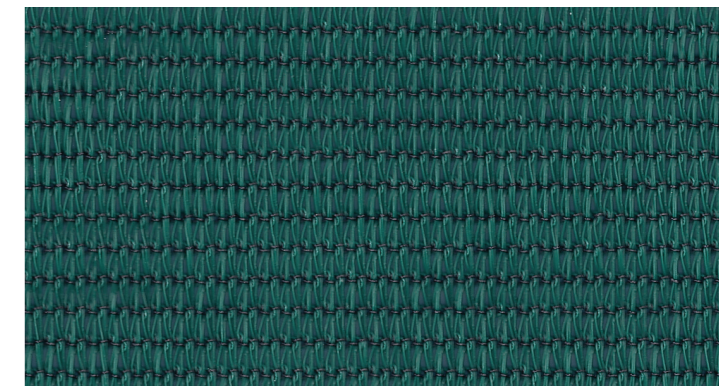
Made from UV-stabilised HDPE, it is designed to resist sun damage, water absorption, rotting and will not tear or fray if cut. This recyclable fabric provides weather and pest protection, can enhance yields, improve crop aesthetics and provide an overall more efficient environment for plant growth.



White Medium



Black Medium



Forest Green Medium

- Available in several grades (light, medium and heavy), widths and colours to meet most requirements.
- Strong HDPE fabric won't rot or absorb moisture and withstands harsh weather conditions
- UV block range from 52%–77% provides optimal conditions for healthy plant growth or for the protection of assets and livestock
- Full 10-year UV degradation warranty on fabric
- 100% lead and phthalate free for a healthier environment
- Greenguard® and Oeko-Tex® certified provides confidence in operational quality assurance
- Engineered in Australia for the harshest conditions
- 100% recyclable

## Performance

	Light	Medium	Heavy
Nominal Fabric Mass	160gsm	220gsm	276gsm
Tensile Strength - warp	661 N/50mm	591 N/50mm	545 N/50mm
Elongation at break - warp	55.60%	60.80%	89.50%
Tensile Strength - weft	836 N/50mm	1485 N/50mm	2032 N/50mm
Elongation at break - weft	66%	54.70%	56.10%
Wing tear - warp (mean)	123 N	113 N	109 N
Wing tear - weft (mean)	127 N	196 N	225 N
Bursting pressure (mean)	2000 kPa	2450 kPa	2400 kPa
Bursting force (mean)	1090 N	1170 N	1205 N

## Applications

- Light to medium duty shade structures
- Shade sails
- Privacy screening
- Scaffold mesh
- Livestock shading

Weight	Colour	Width (m)	Length (m)	Item code	Cover Factor %	Average Trans %	Shade Factor %	Average UVR Trans %	Average PAR Trans %	UVR Block %
Light	Black	4.00	50	466848	54	44	56	47	44	53
	Forest Green	2.00	50	466862	54	50	50	48	51	52
	Forest Green	4.00	50	466855	54	50	50	48	51	52
	White	2.00	50	466879	54	71	29	46	78	54
Medium	White	4.00	50	466886	54	71	29	46	78	54
	Black	2.00	50	466916	68	33	67	33	33	67
	Black	4.00	50	466923	68	33	67	33	33	67
	Forest Green	2.00	50	466930	68	35	65	33	35	67
	Forest Green	4.00	50	466947	68	35	65	33	35	67
	White	2.00	50	466954	66	62	38	35	70	65
Heavy	White	4.00	50	466961	66	62	38	35	70	65
	Black	2.00	50	466794	77	23	77	23	23	77
	Black	4.00	50	466800	77	23	77	23	23	77
	Forest Green	2.00	50	466817	76	27	73	25	28	75
	Forest Green	4.00	50	466824	76	27	73	25	28	75



Please note, due to the limitations of the printing process, colours may not represent the true colour